

INAV Vehicle Guide

Synerduino STM

VERSIONS: F405, F411, H743

For more Information:
www.synerflight.com



INTRODUCTION

Vehicle Guide Introduce

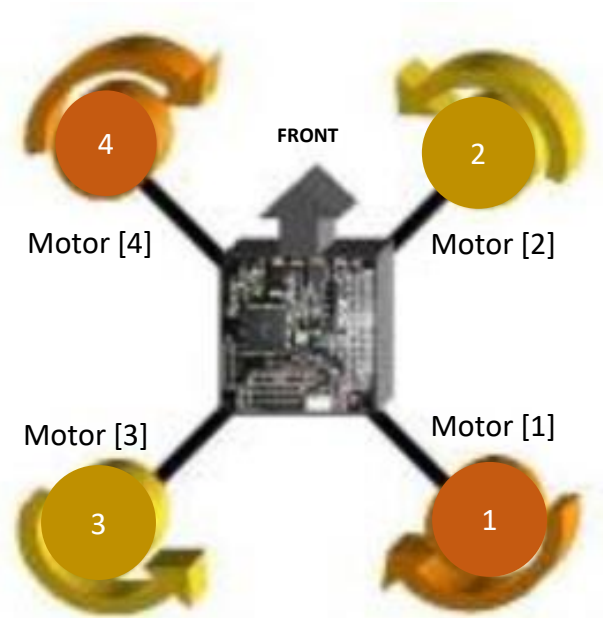
- ESC
- Motor

Vehicle Type Layout

- Basic Quad
- Basic Fixwing

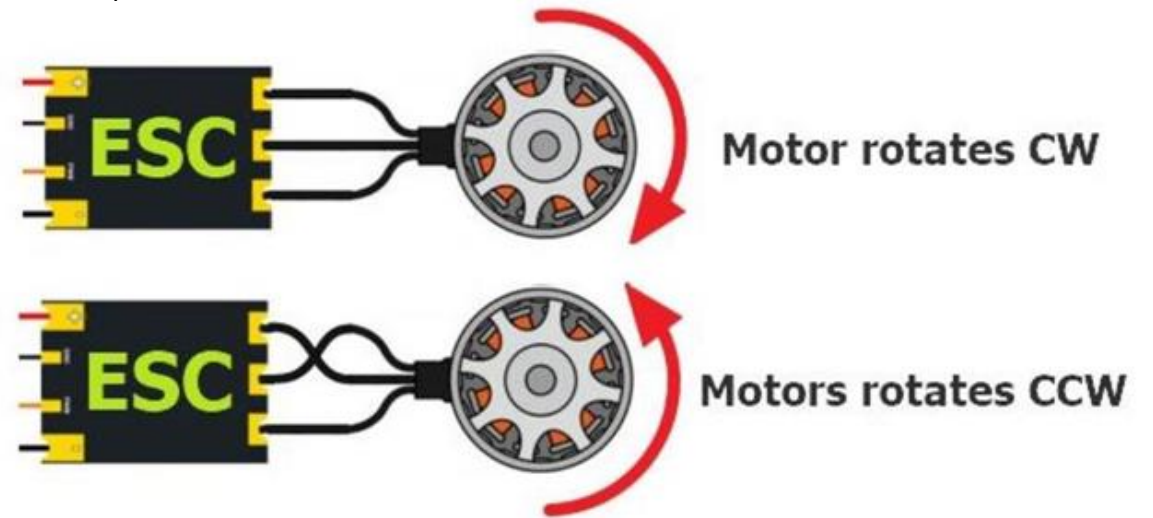


MOTOR, ESC, & PROPELLER INSTALLATION



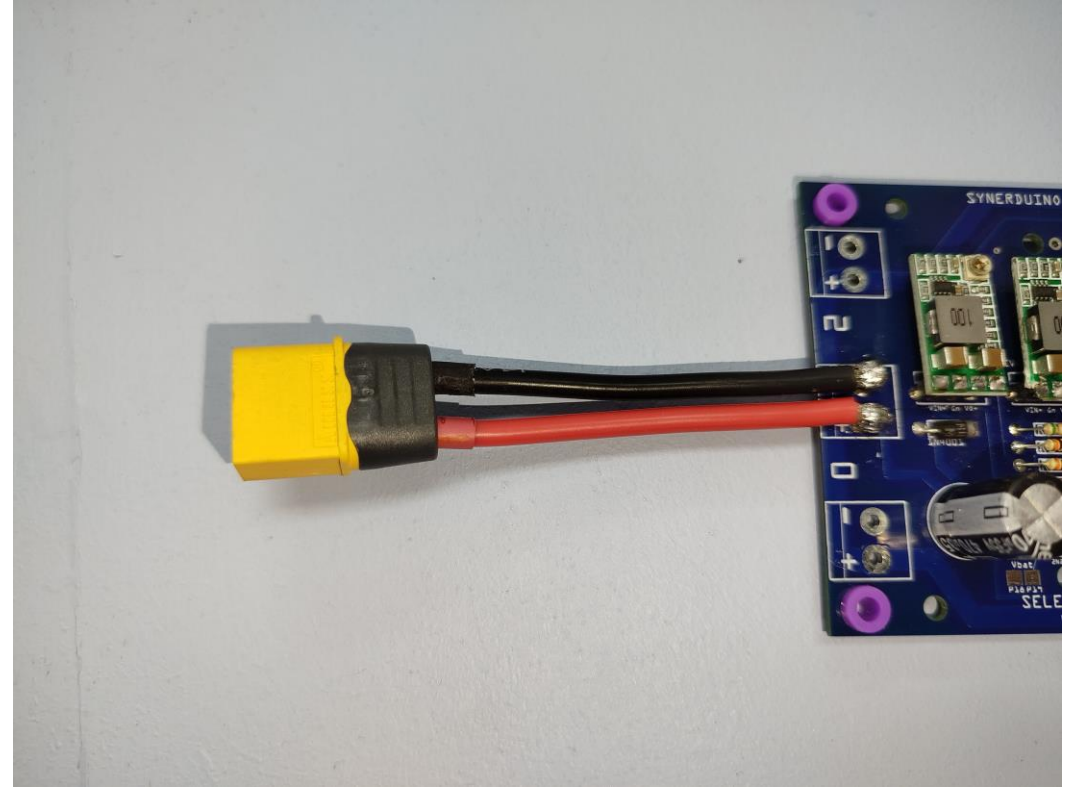
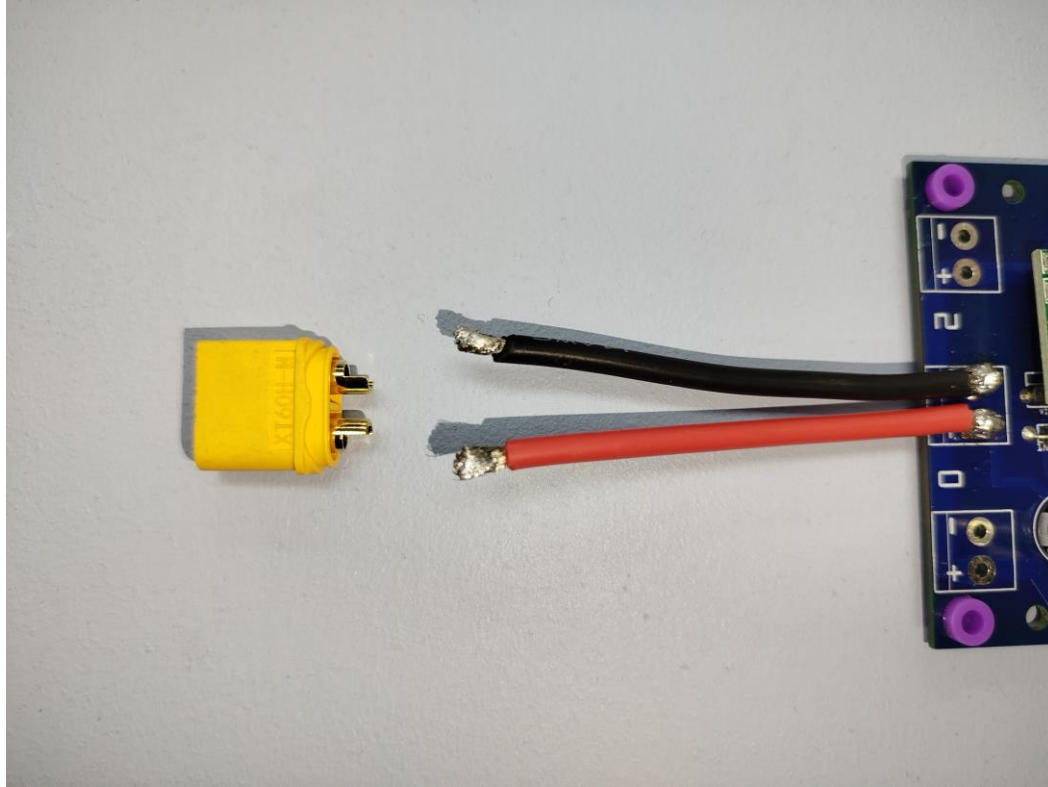
Note : you can pre solder the motor to the board and check for rotation before installing the propeller to ensure all motor rotations are correct

Electronic Speed Controller

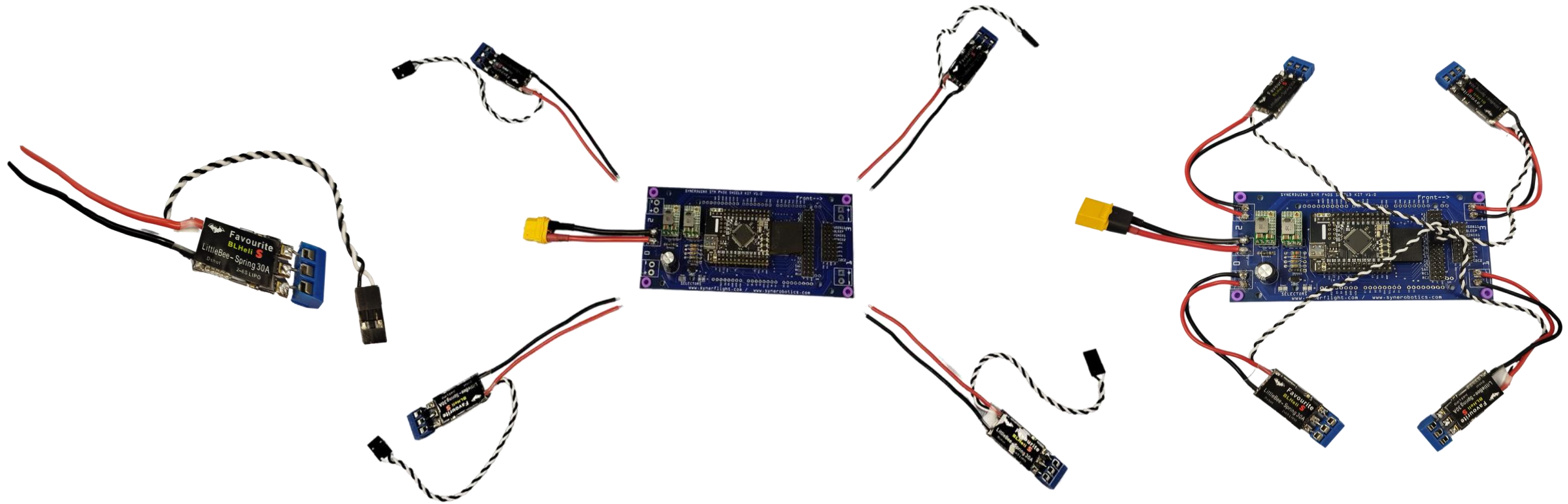


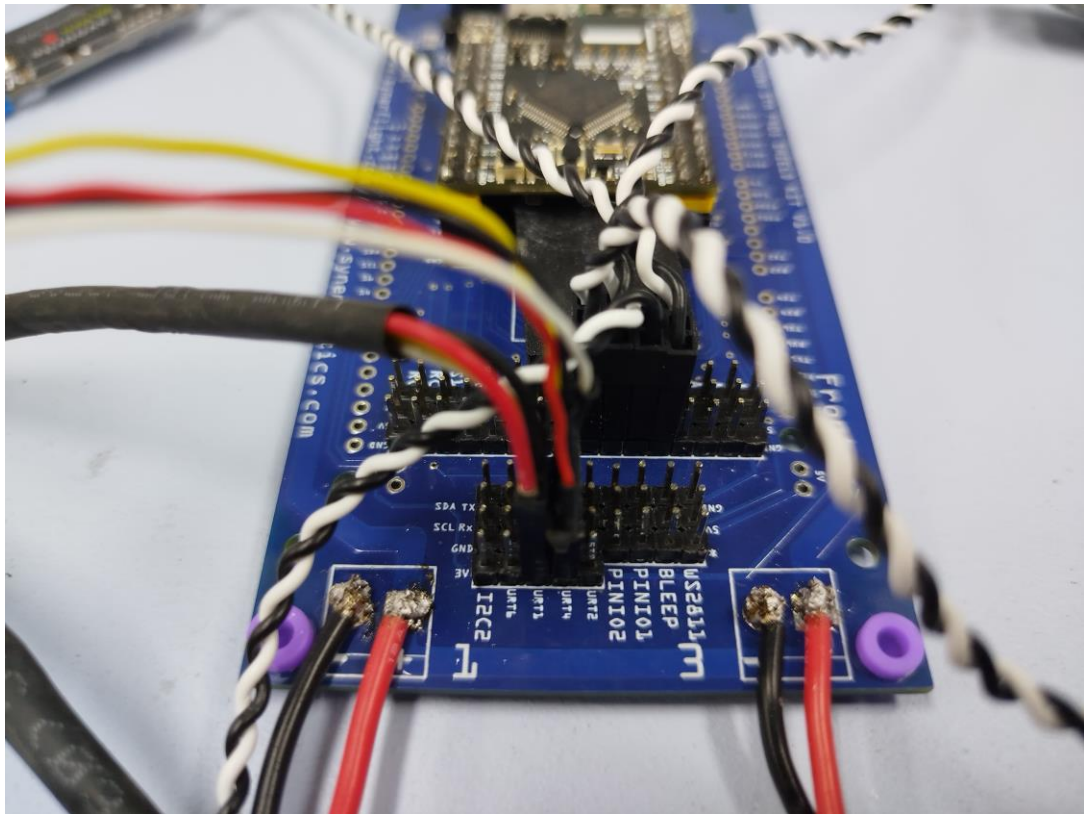
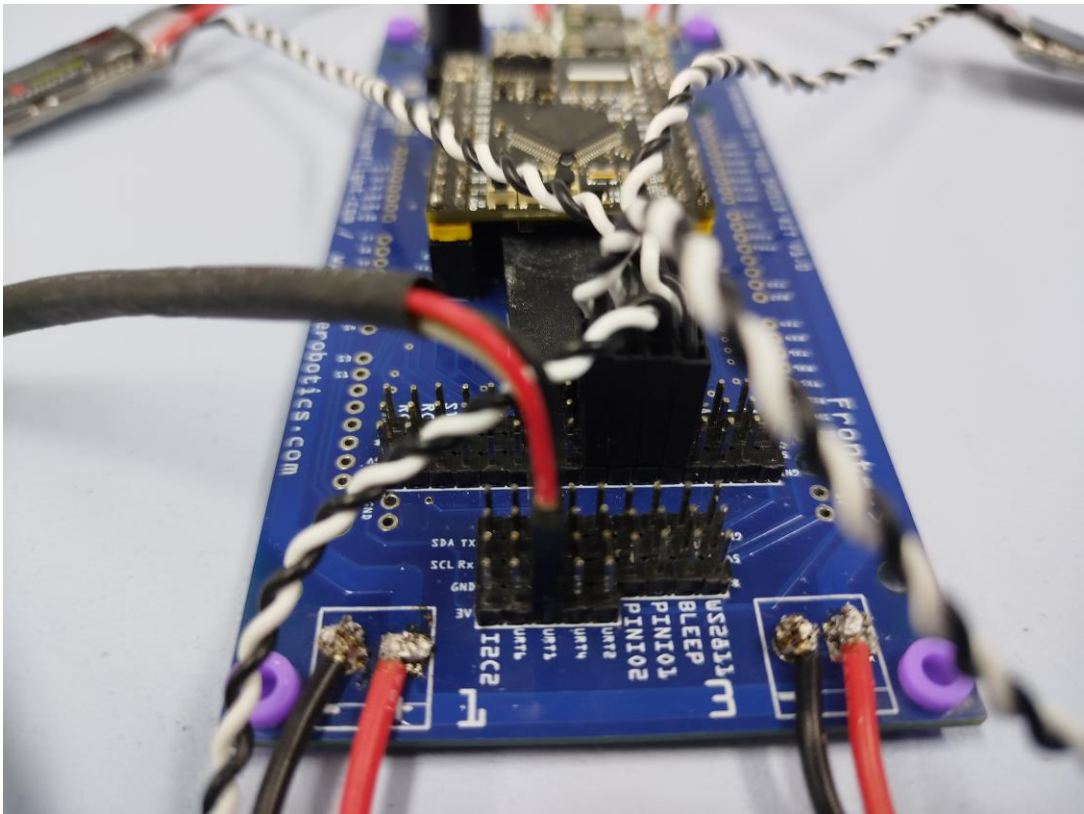
Note : on some brands of motor they may come in two different prop nuts color (Known as self tightening nuts)

POWER

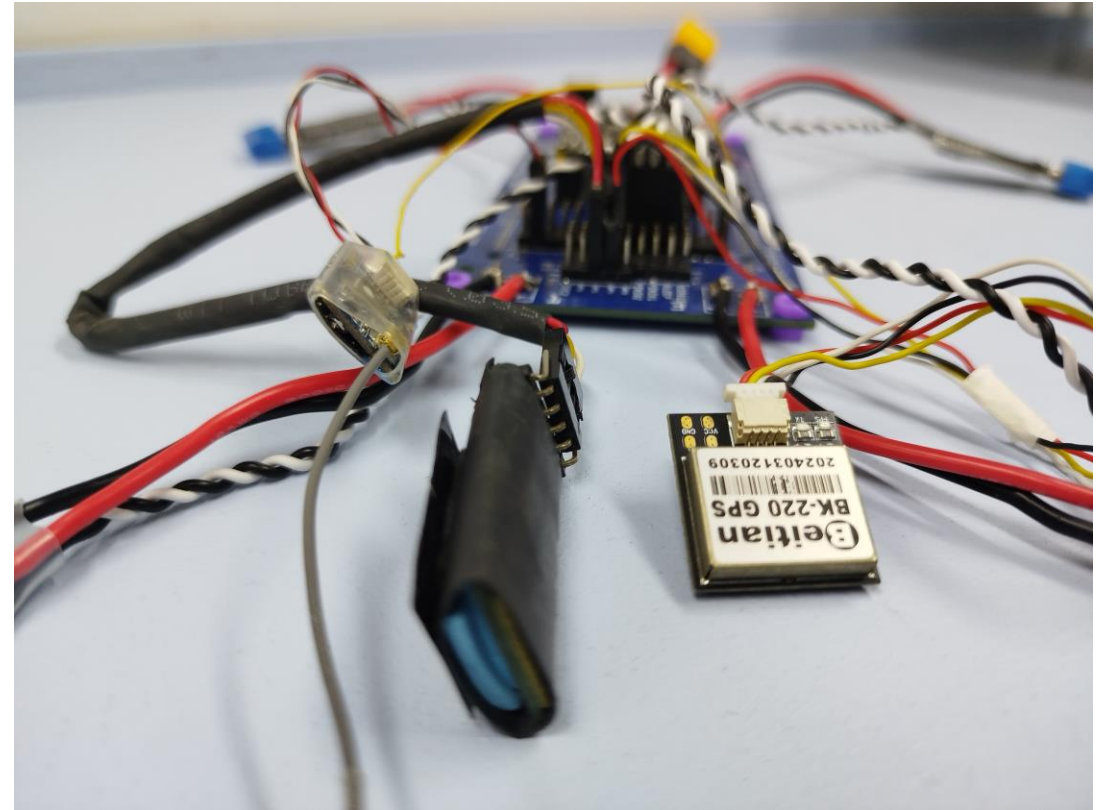
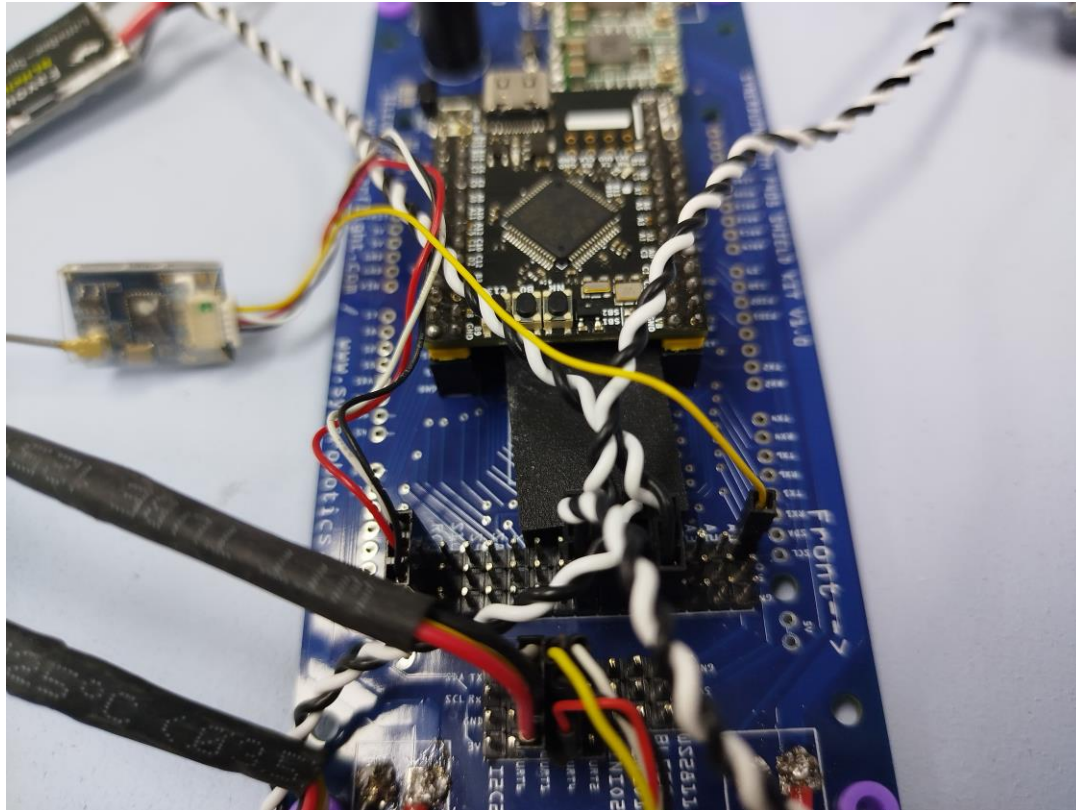


ESC INSTALLATION

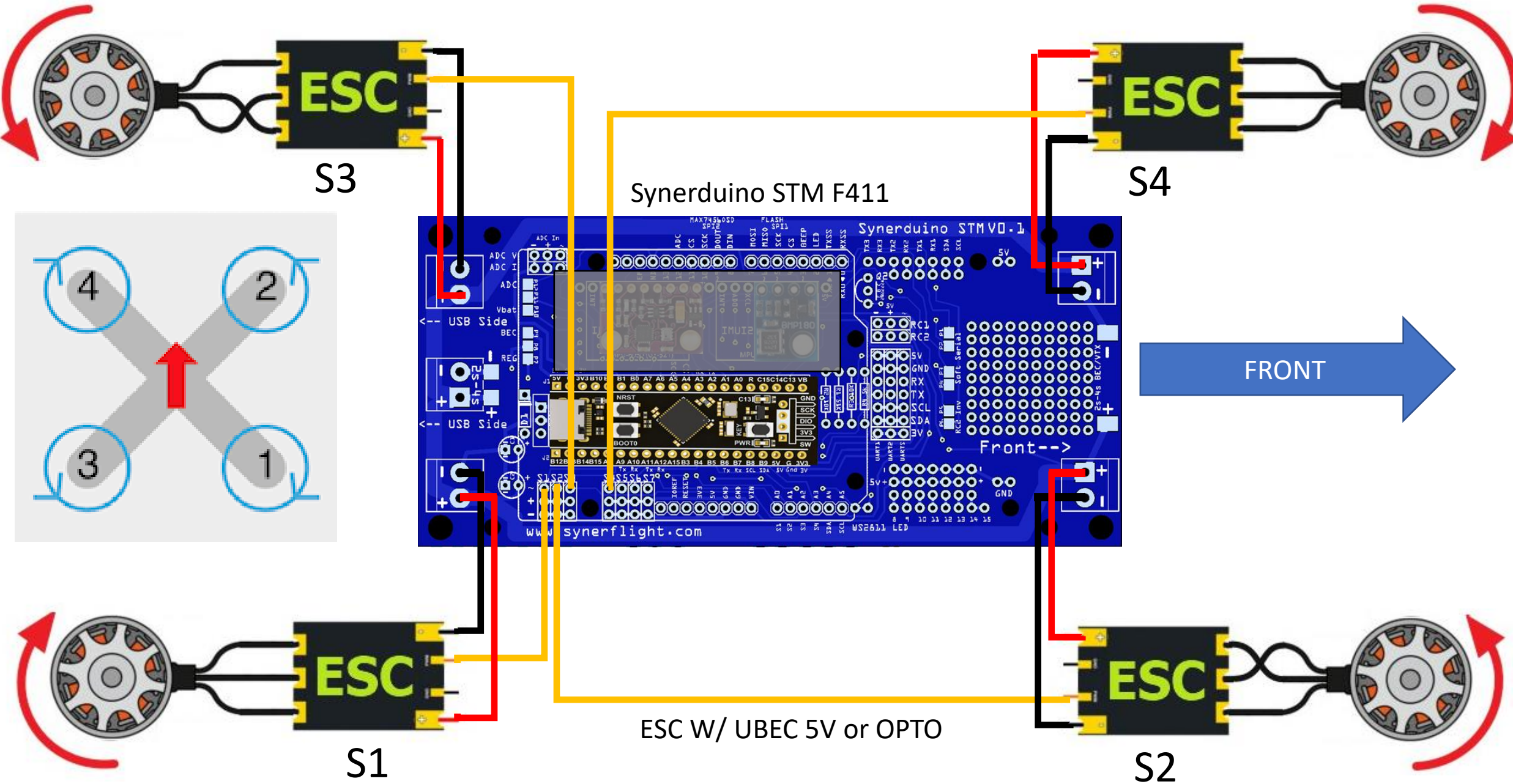




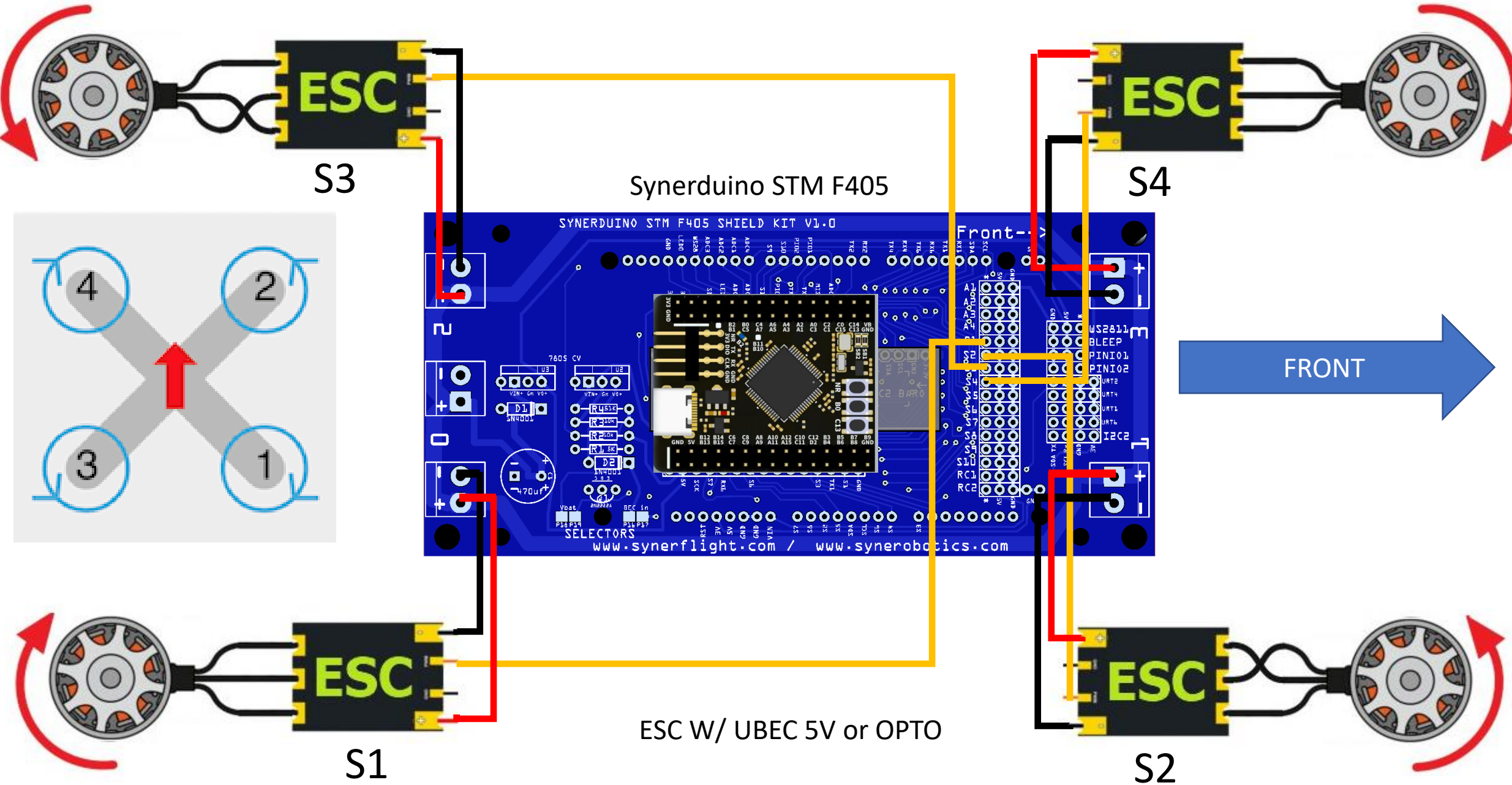
ASSEMBLY

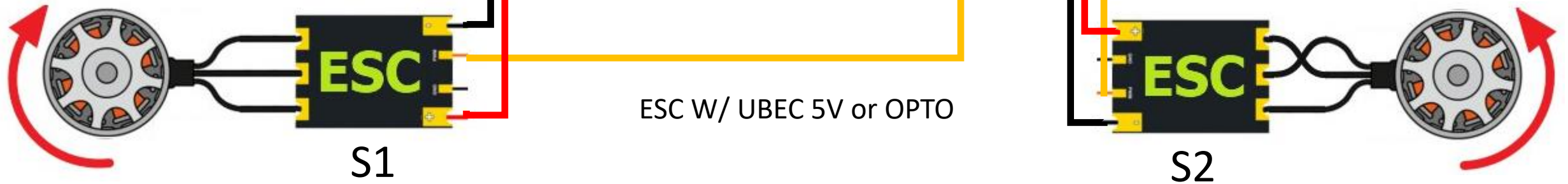


Multicopter Setup INAV

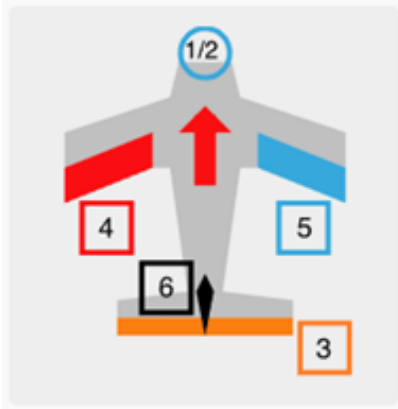
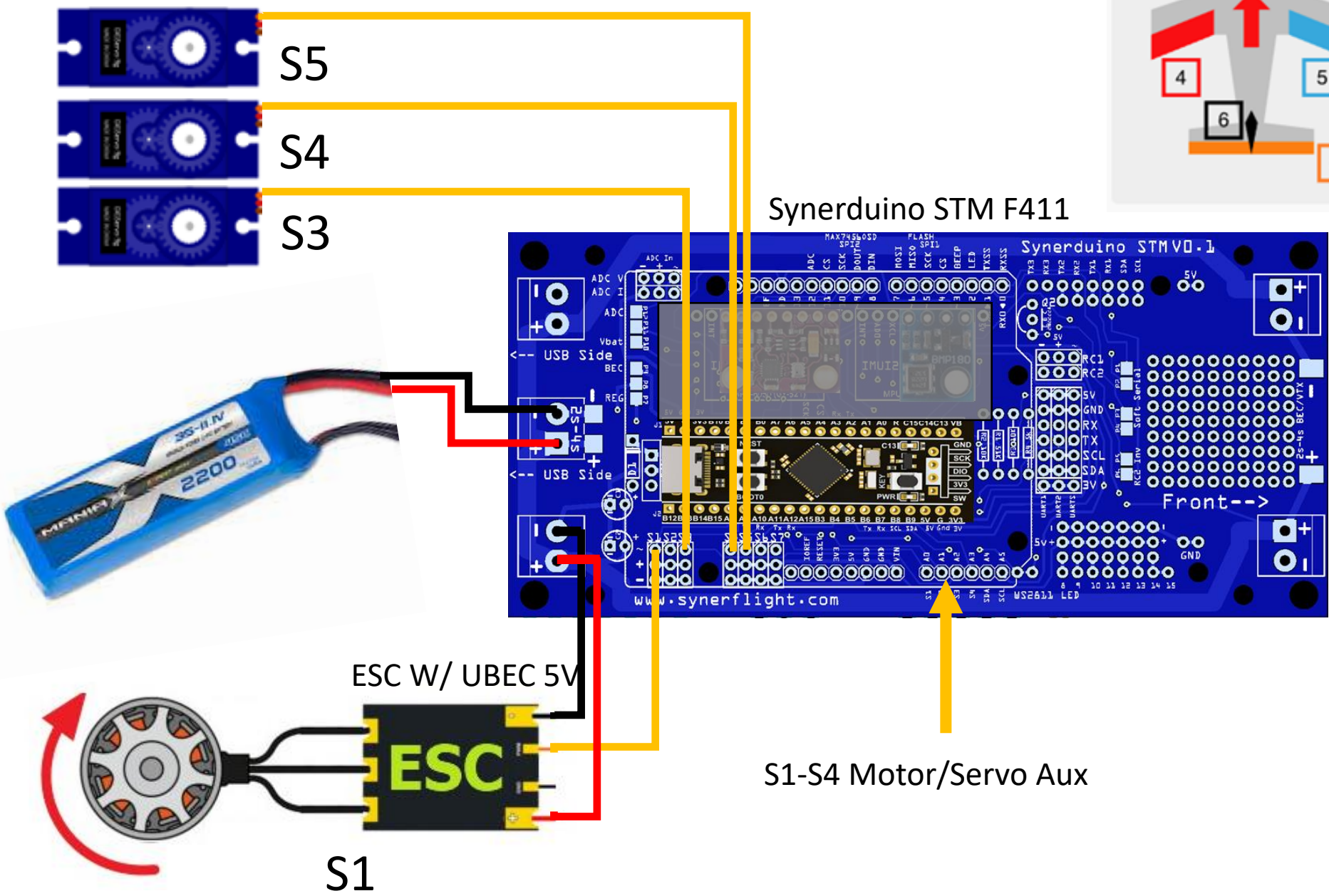


Multicopter Setup INAV

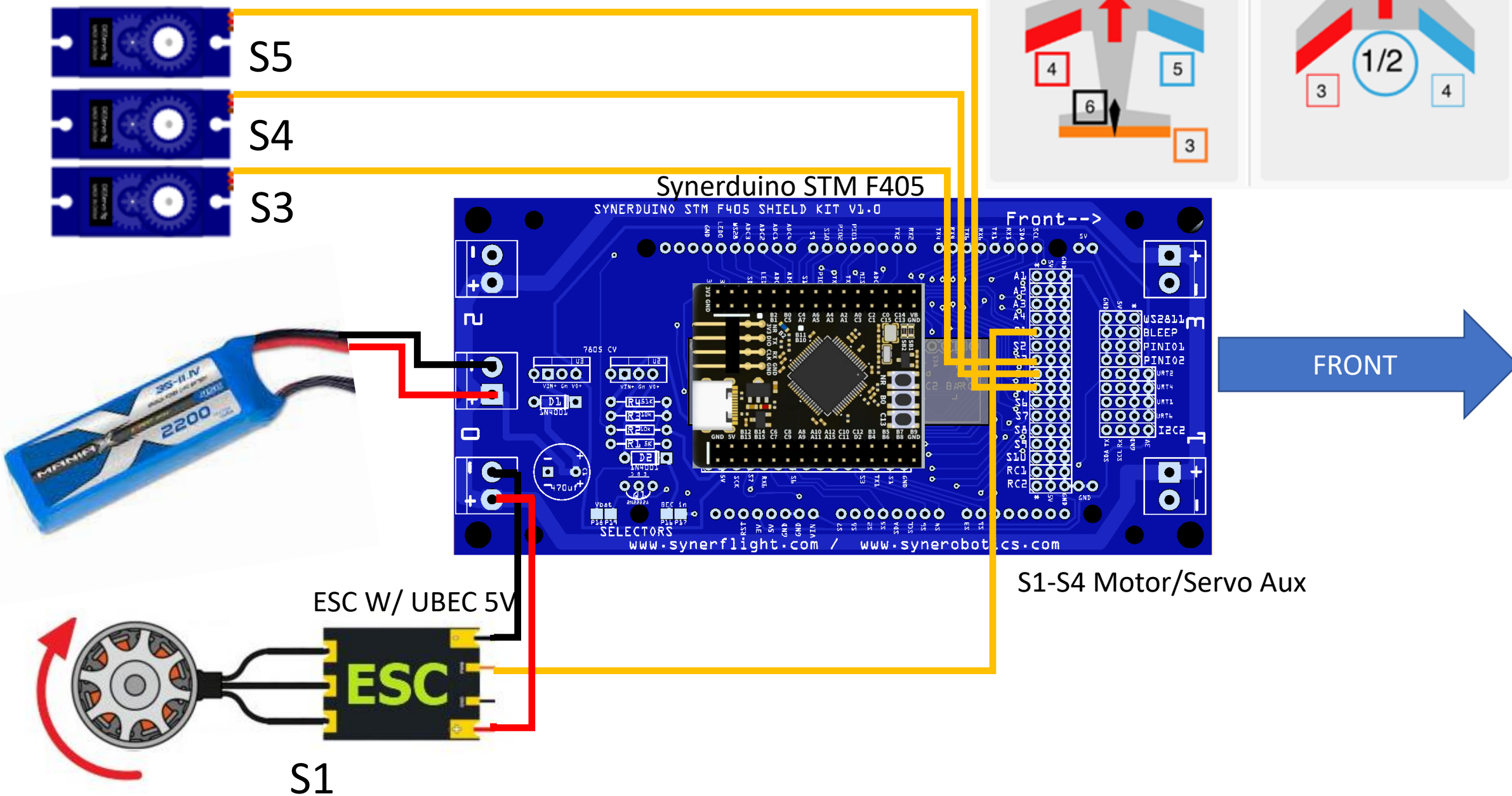




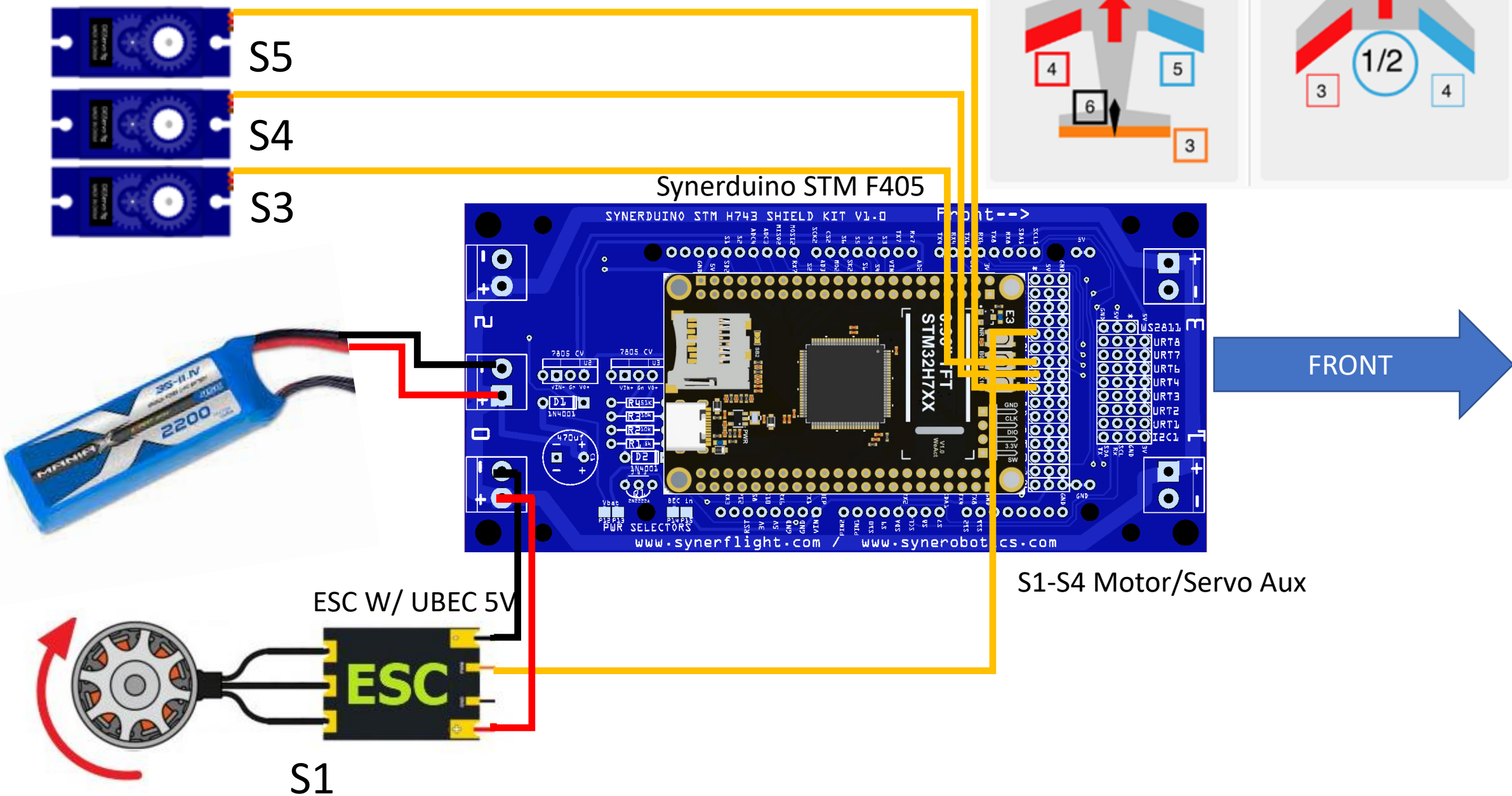
Fixwing Setup INAV



Fixwing Setup INAV



Fixwing Setup INAV



Fixwing

