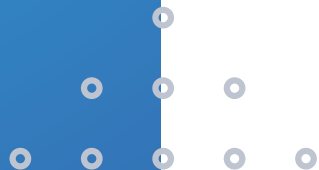


INTRODUCTION

Installation

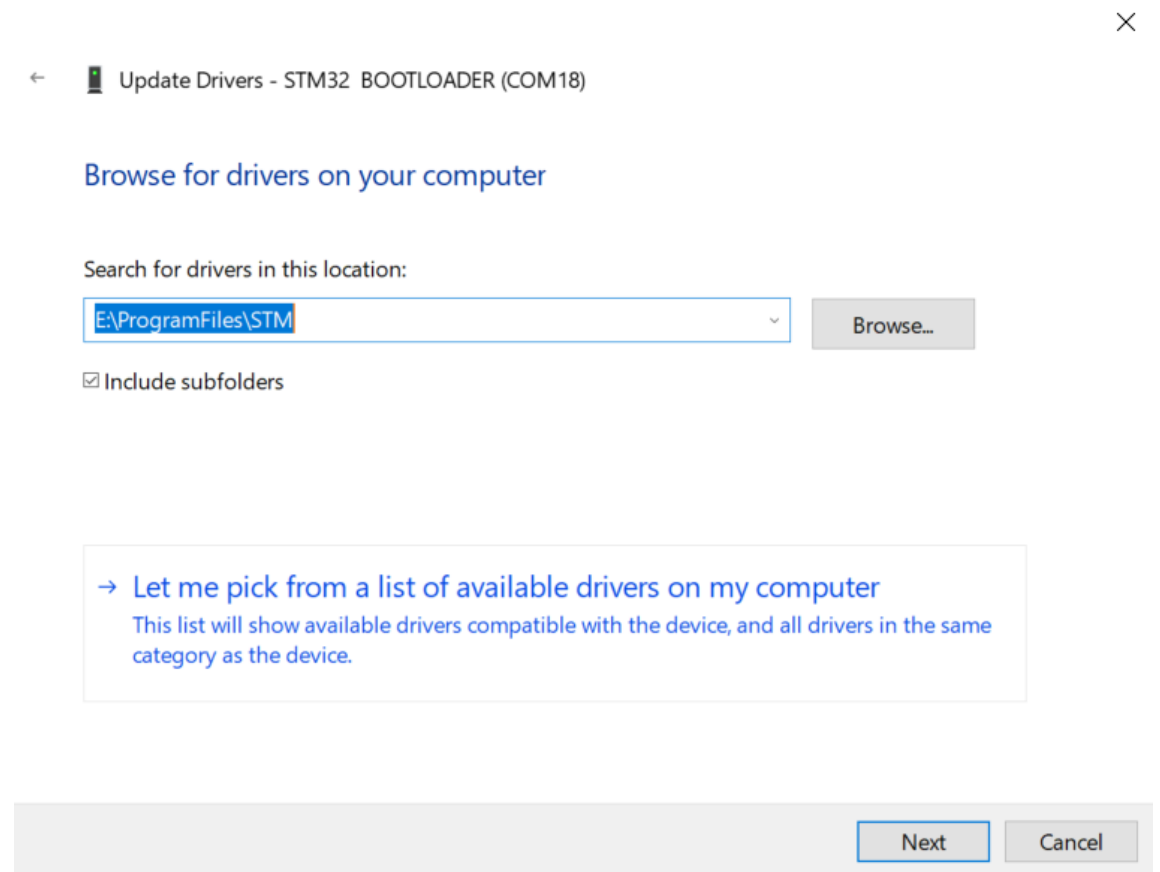
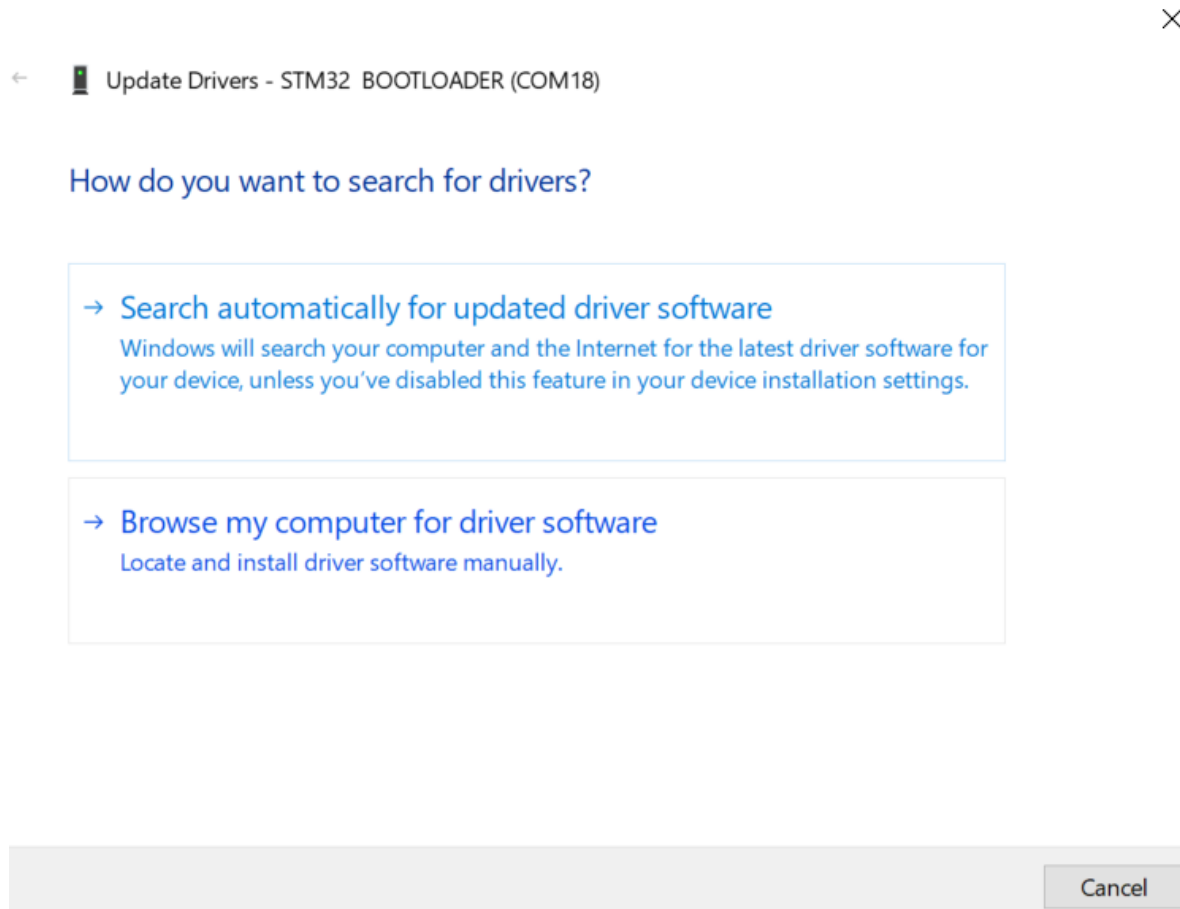
- Firmware
- Setup
- Configuration

This guide shows the software installation process

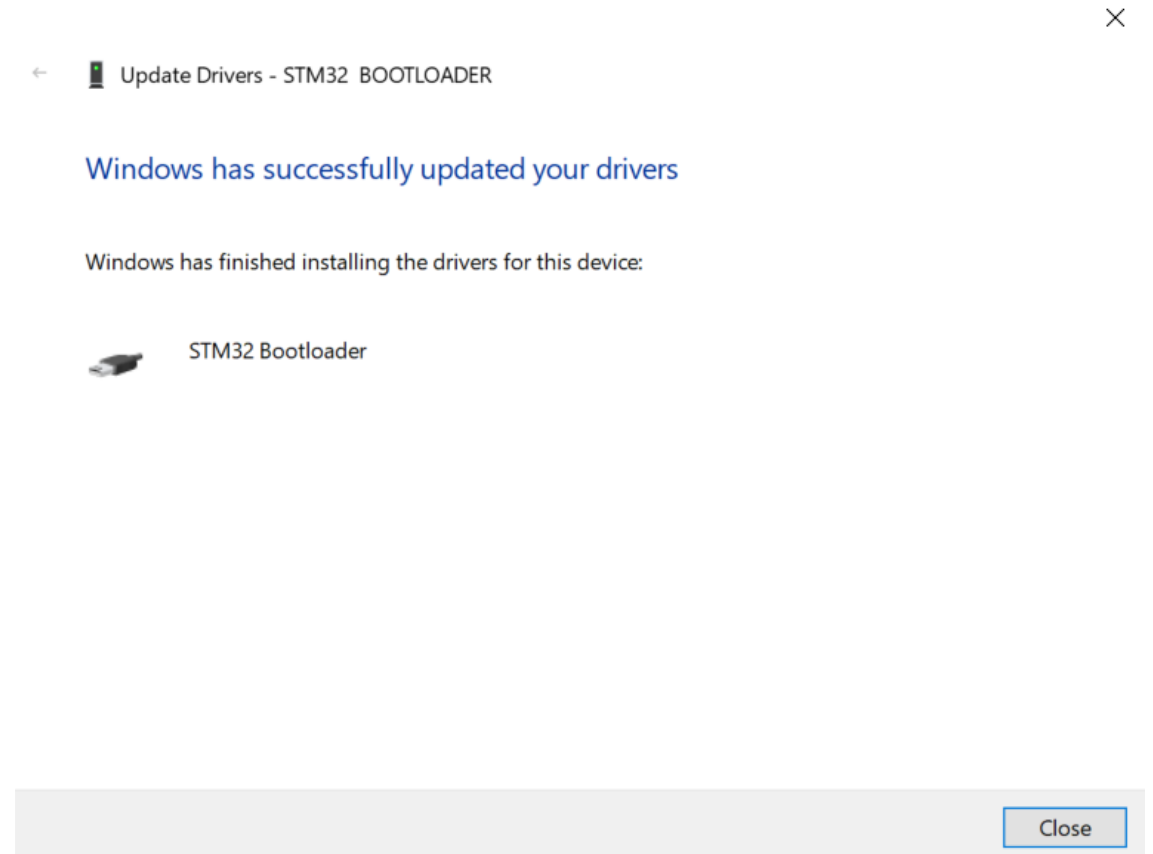
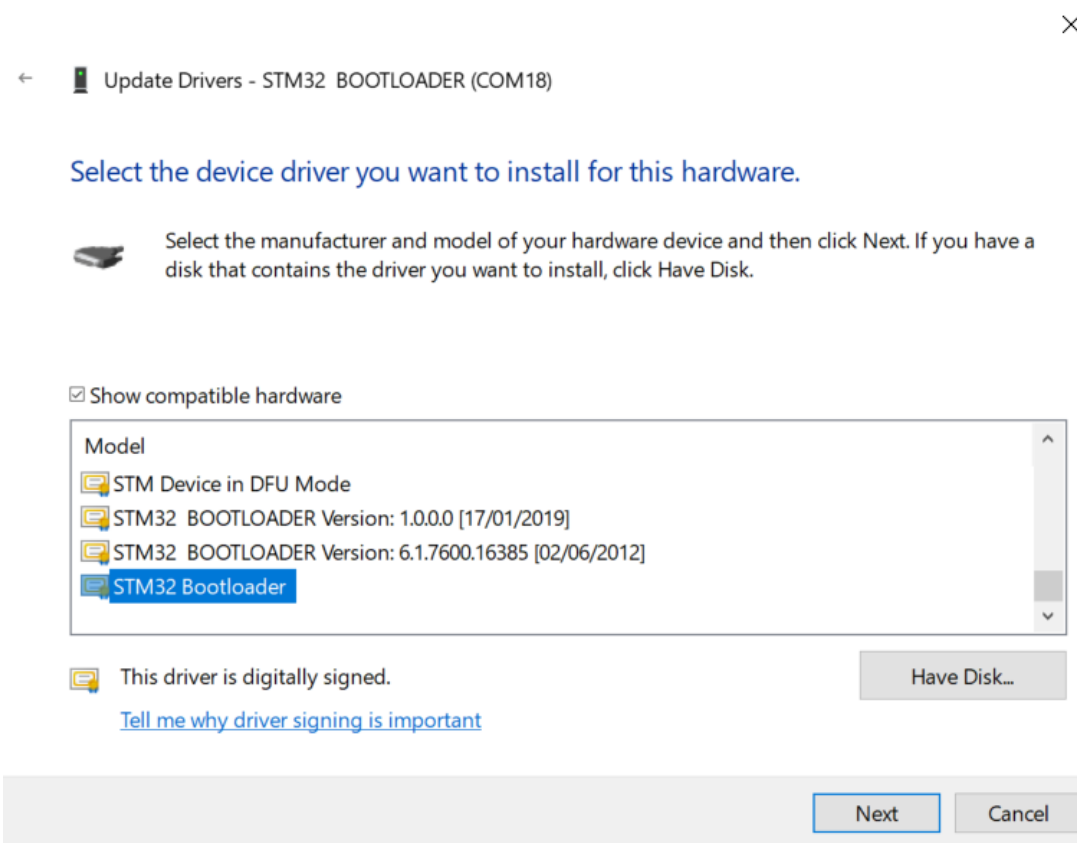


FIRMWARE INSTALLATION

- Browse my Computer for Driver
- Let Me Pick from List

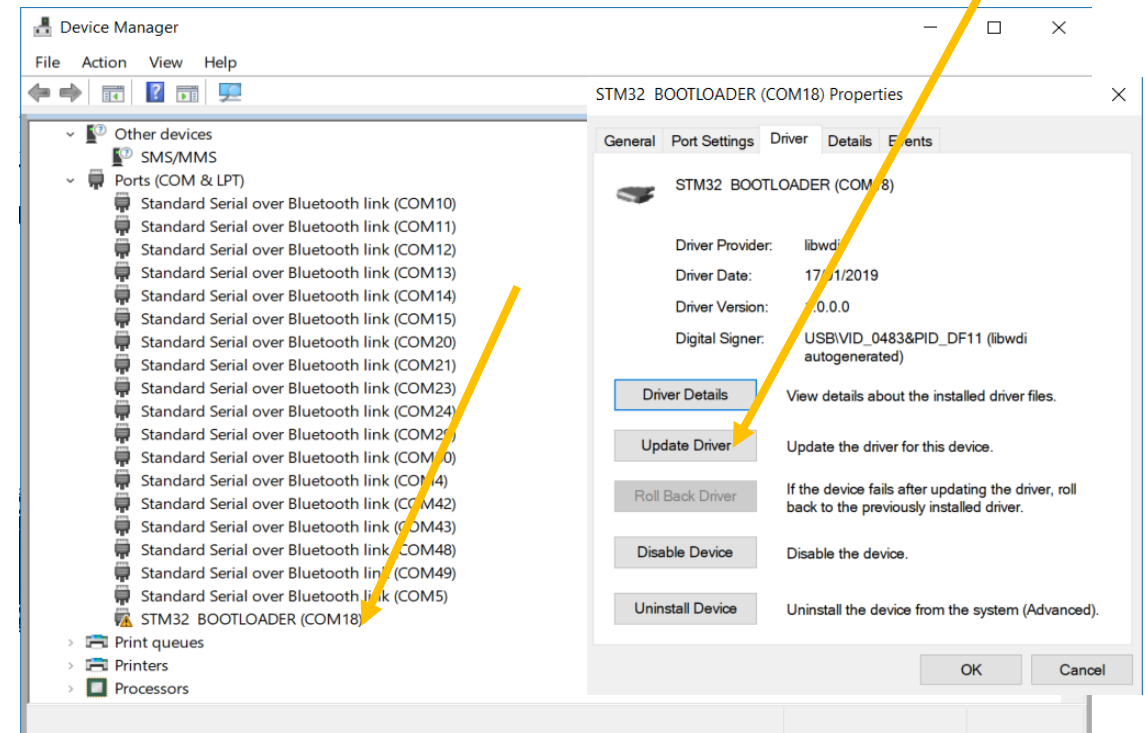
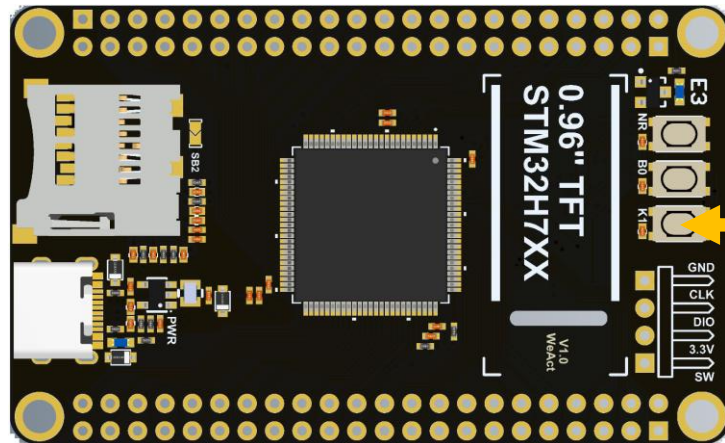
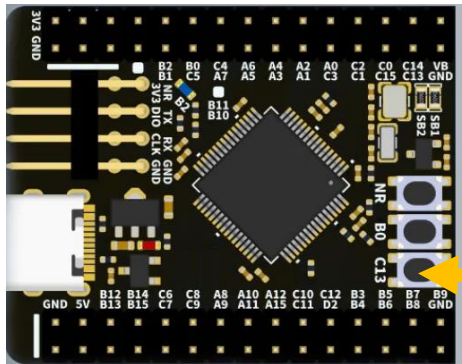


FIRMWARE INSTALLATION

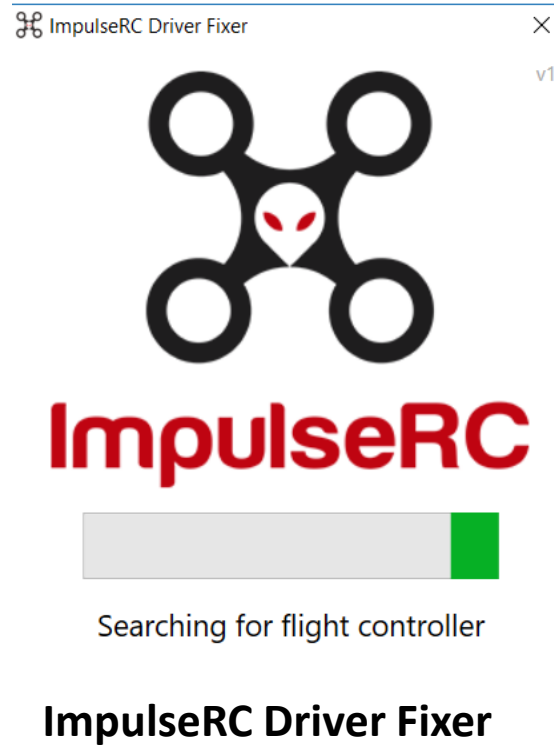


FIRMWARE INSTALLATION

- Plug in USB you see Blue Led fading in and out
- Hold the Key Button for 3seconds till the blue light flashes and goes out
- In device manager the STM32 Bootloader (Com should show up)
- Note : this is for Brand new boards that were not flash with firmware , skip this for Synerduino package kits as they are preflashed for your convenience



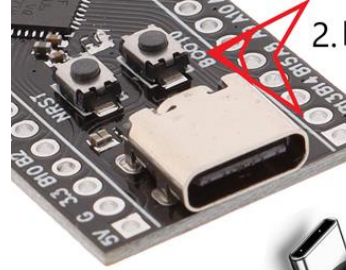
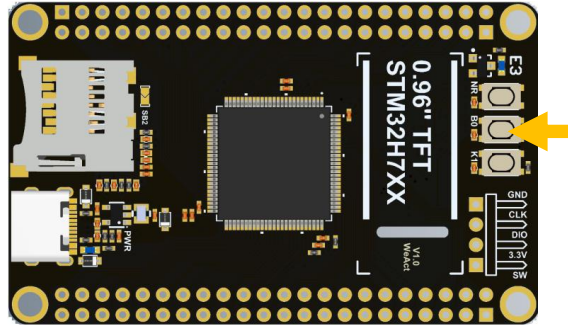
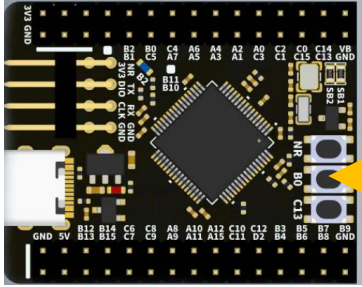
FIRMWARE INSTALLATION



https://impulserc.blob.core.windows.net/utilities/ImpulseRC_Driver_Fixer.exe

- Start ImpluseRC Driver Fixer
- Connect the FC USB to the PC While On DFU mode . (DO NOT power on FC via external 5V or Vbat)
- The ImpulseRC Driver Fixer should then see and load the proper driver

FIRMWARE INSTALLATION



2. Hold down the boot0 button.

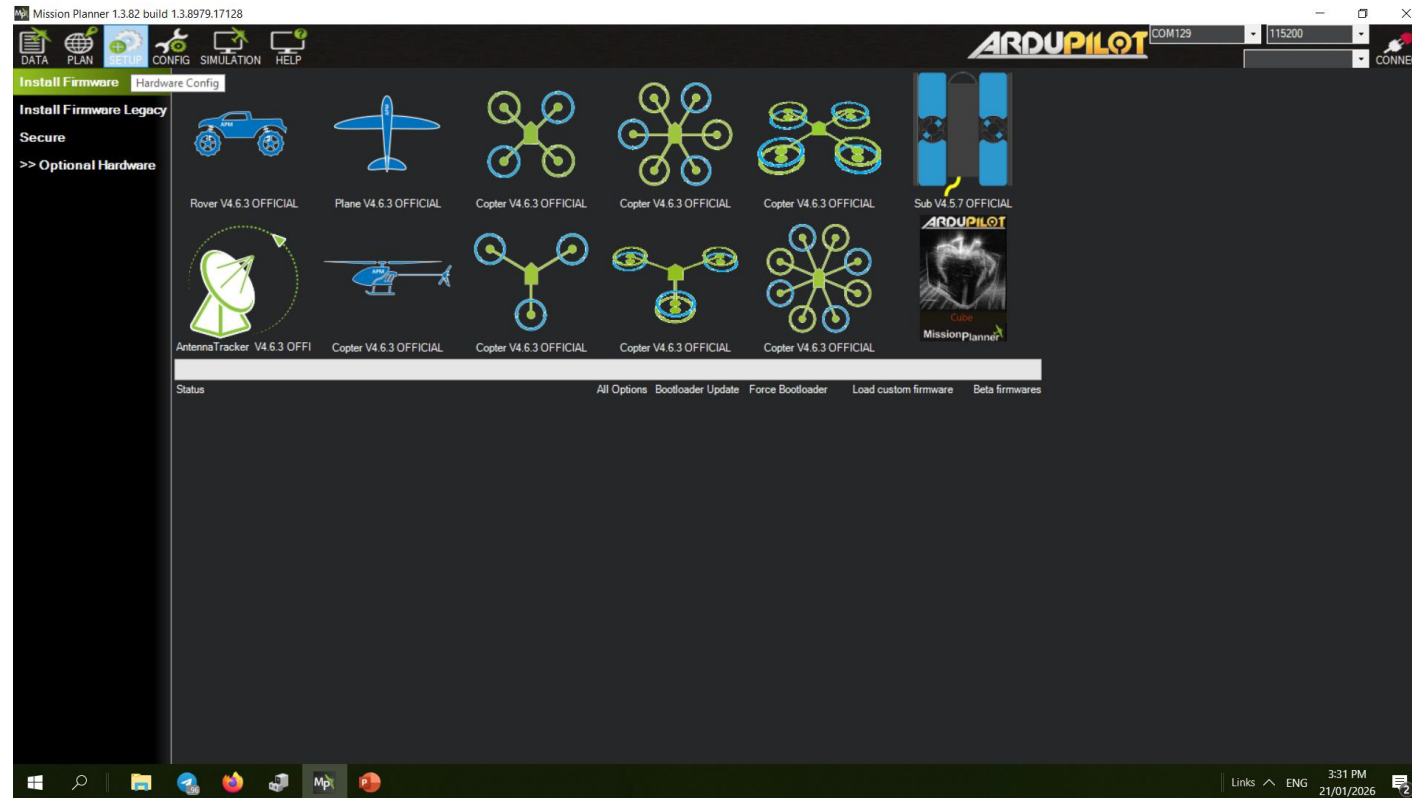
1. Connect TYPE-C
usb to Board



3. Connect to USB to PC

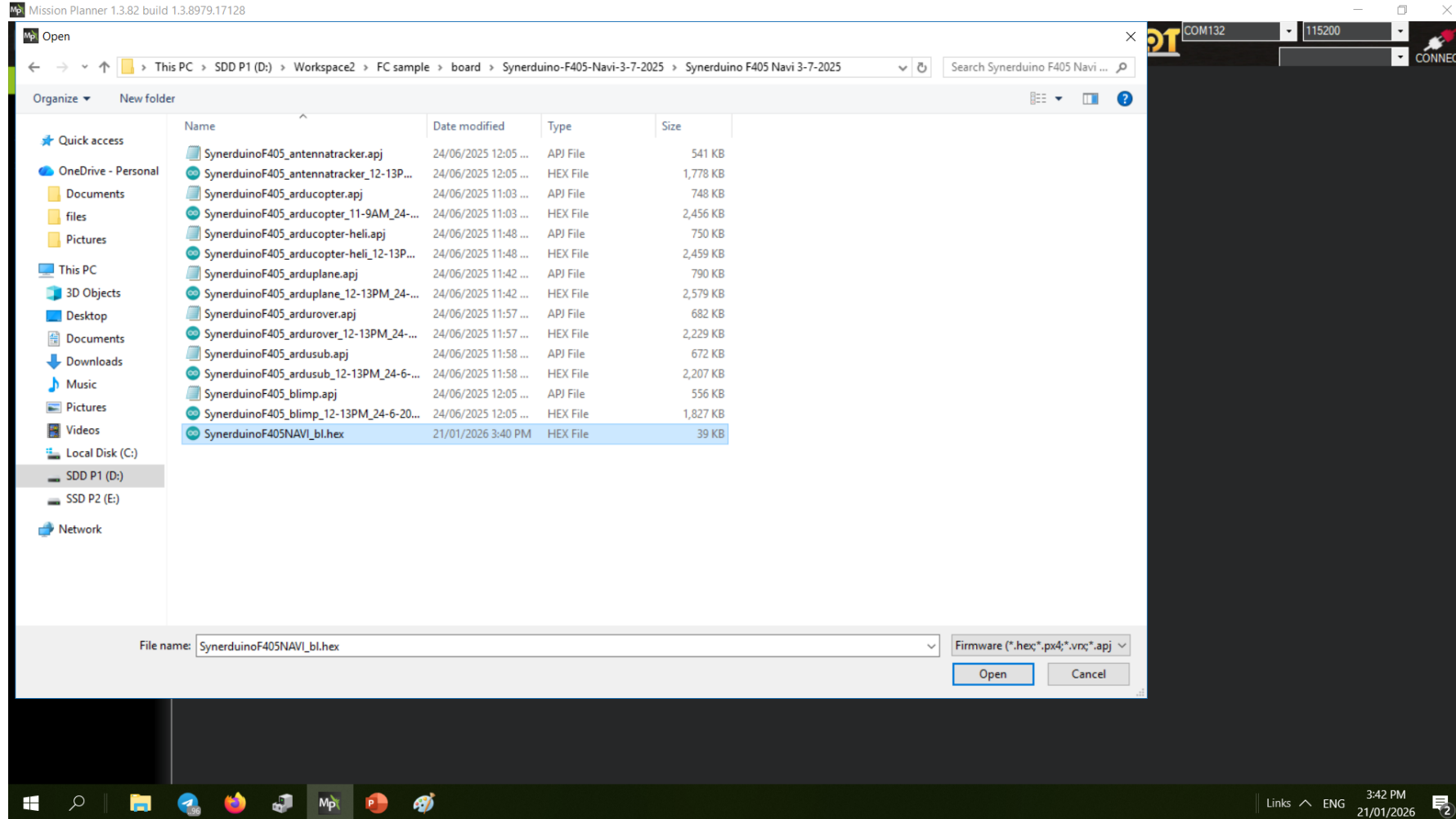


FIRMWARE INSTALLATION



Open Mission planner

1. Setup Tab
2. Install Firmware
3. Load Custom Firmware



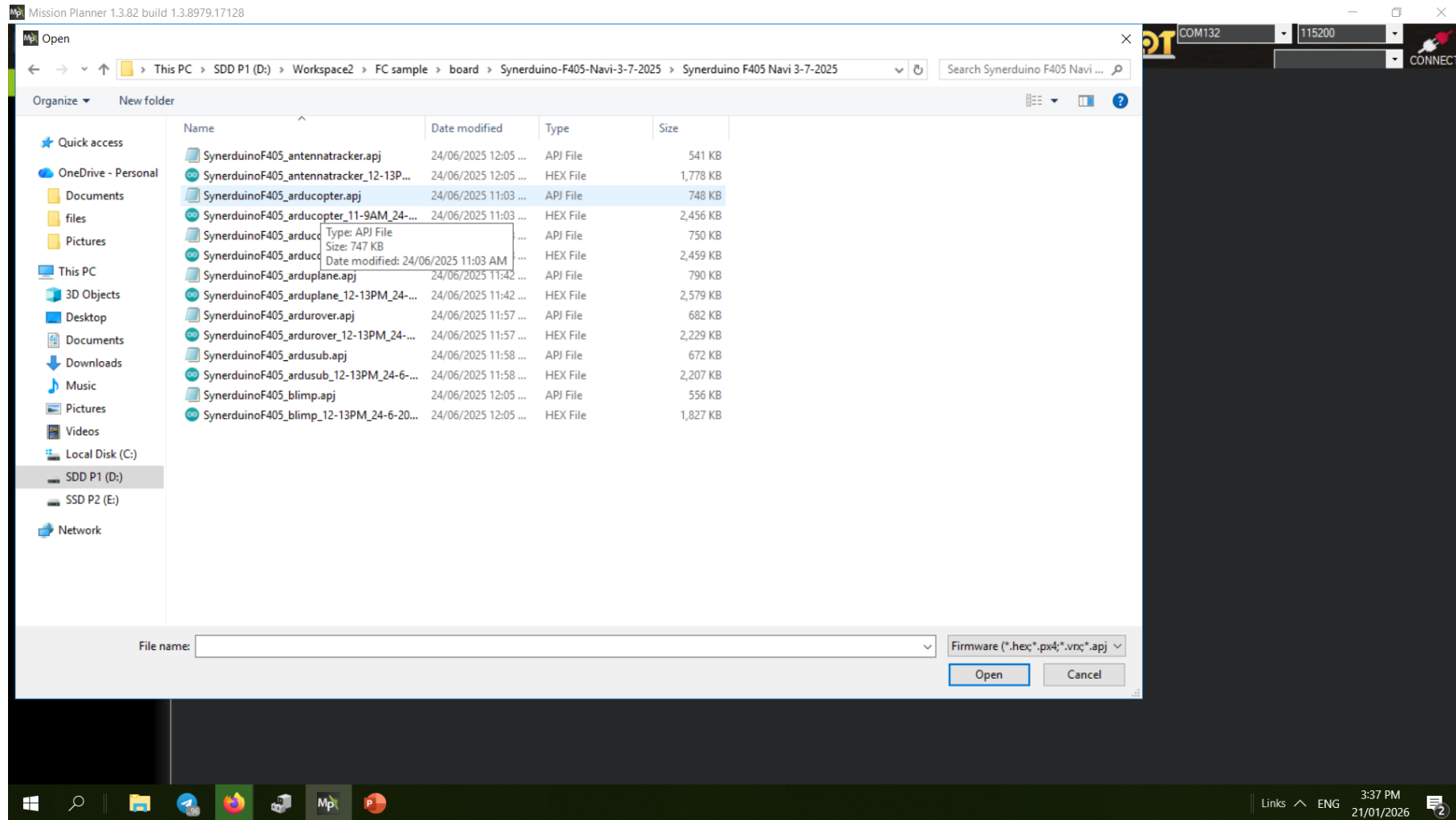
Load Custom Firmware
Select bootloader – SynerduinoF405NAVI.hex



Click OK to Upload Via DFU



After Flashing DFU bootloader
Disconnect and Reconnect the USB of the Synerduino board



Same process this time the Comport needs to be selected to the Com of your board but not connected to the mission planner

Load Custom Firmware

Then select vehicle file arducopter.apj



From there the process of loading is complete .
Disconnect and reconnect the USB one more time



Connect mission planner to Synerduino board with the Com

