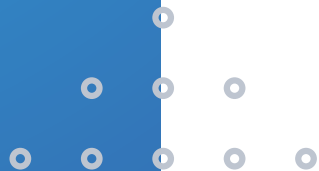


INTRODUCTION

Installation

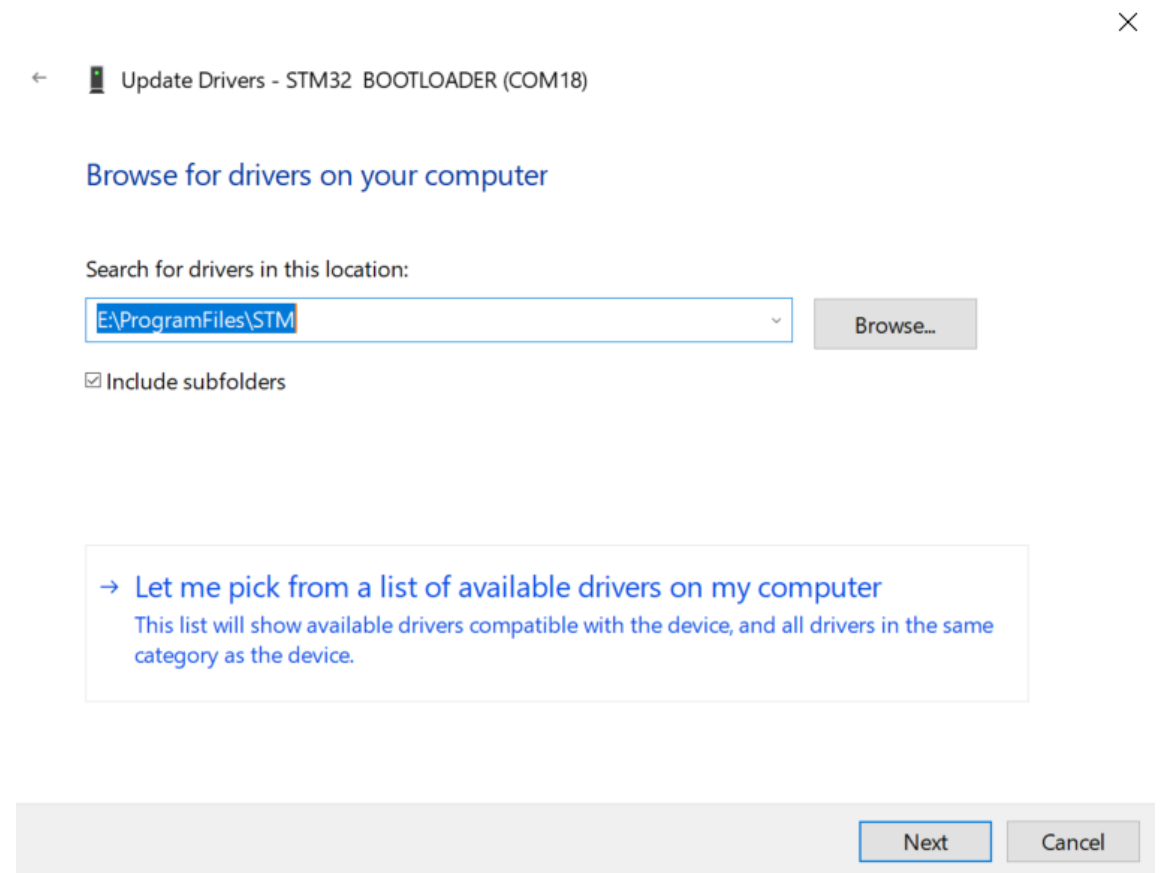
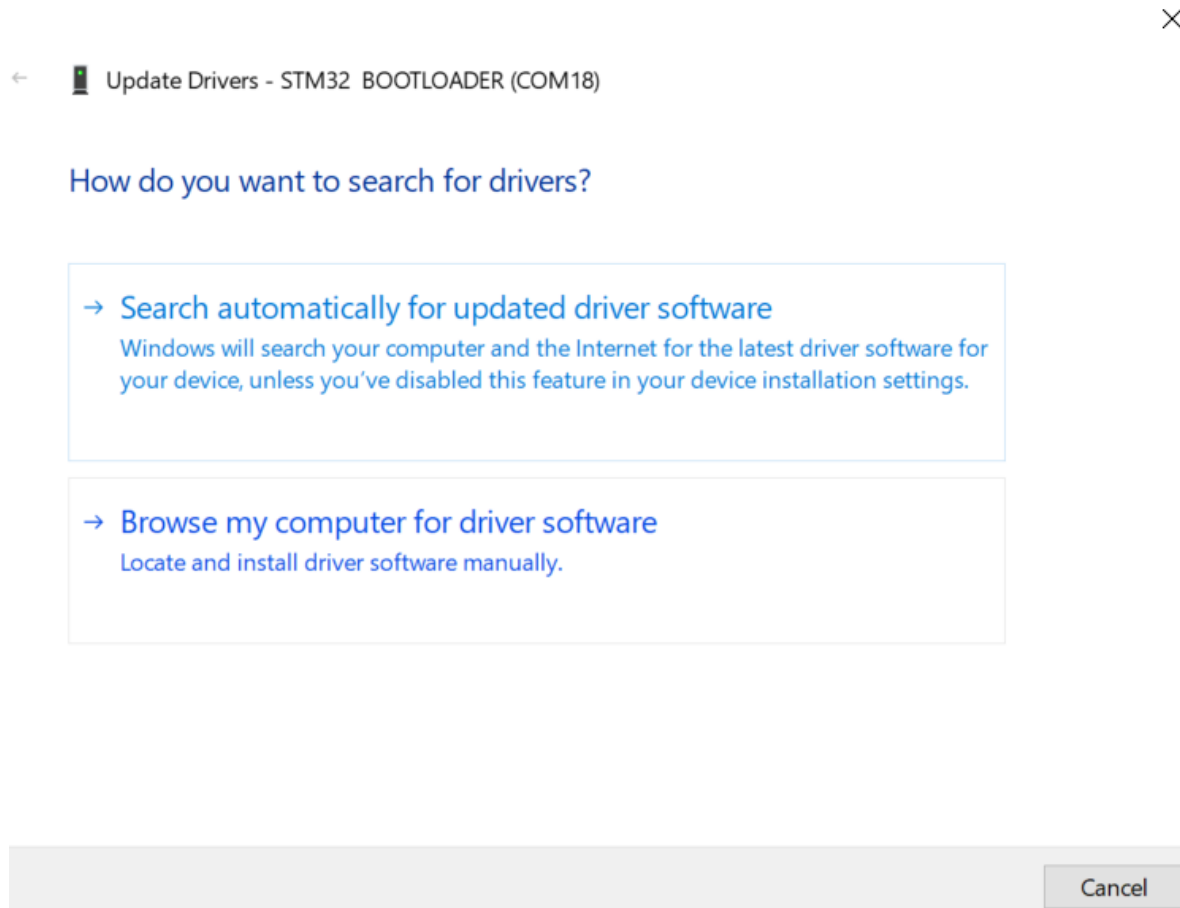
- Firmware
- Setup
- Configuration

This guide shows the software installation process



FIRMWARE INSTALLATION


- Browse my Computer for Driver
- Let Me Pick from List



FIRMWARE INSTALLATION





← Update Drivers - STM32 BOOTLOADER (COM18) ×


Select the device driver you want to install for this hardware.

 Select the manufacturer and model of your hardware device and then click Next. If you have a disk that contains the driver you want to install, click Have Disk.

Show compatible hardware

Model

-  STM Device in DFU Mode
-  STM32 BOOTLOADER Version: 1.0.0.0 [17/01/2019]
-  STM32 BOOTLOADER Version: 6.1.7600.16385 [02/06/2012]
-  **STM32 Bootloader**

 This driver is digitally signed. [Tell me why driver signing is important](#)


Have Disk...

Next Cancel

← Update Drivers - STM32 BOOTLOADER ×

Windows has successfully updated your drivers

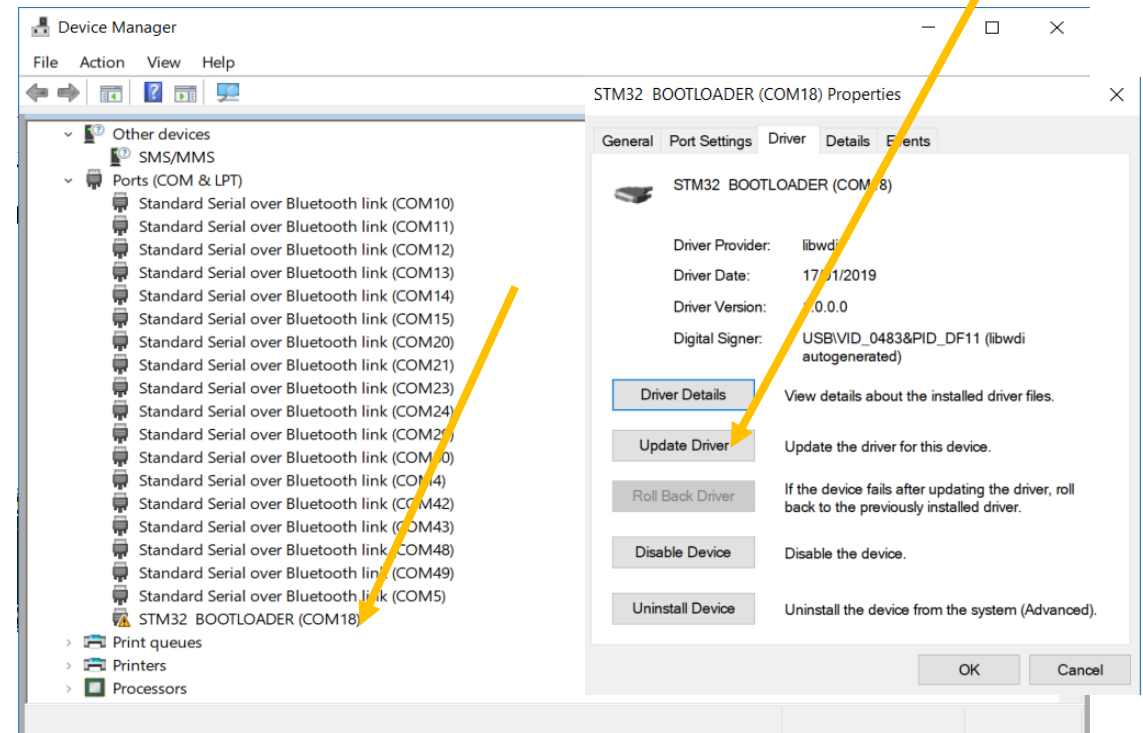
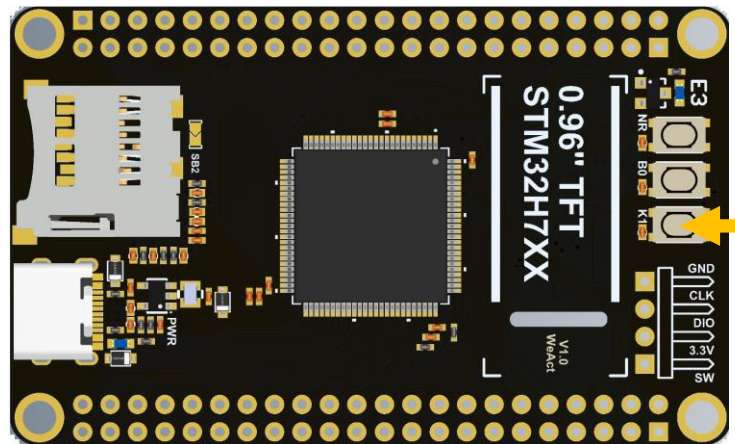
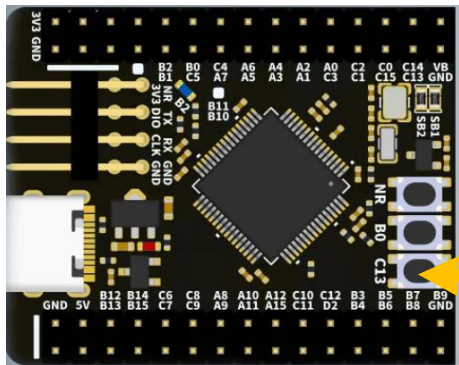
Windows has finished installing the drivers for this device:

 STM32 Bootloader

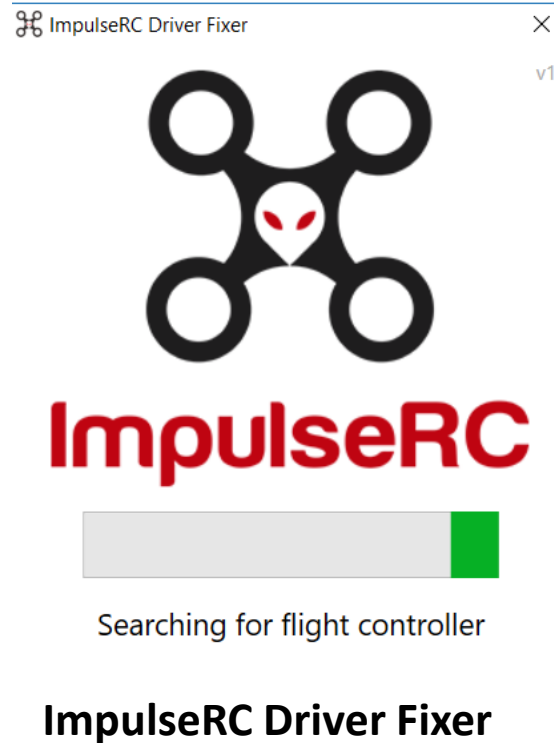
Close

FIRMWARE INSTALLATION

- Plug in USB you see Blue Led fading in and out
- Hold the Key Button for 3seconds till the blue light flashes and goes out
- In device manager the STM32 Bootloader (Com should show up)
- Note : this is for Brand new boards that were not flash with firmware , skip this for Synerduino package kits as they are preflashed for your convenience



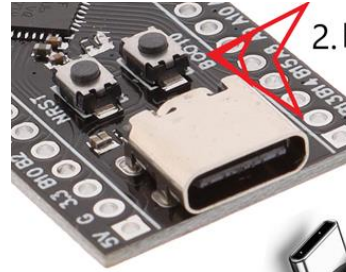
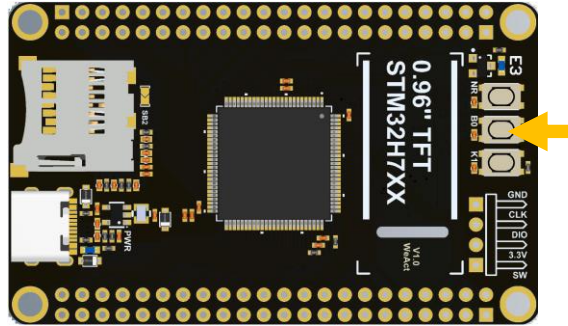
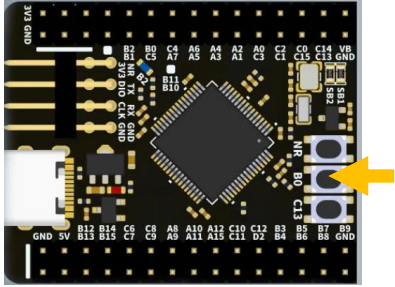
FIRMWARE INSTALLATION



https://impulserc.blob.core.windows.net/utilities/ImpulseRC_Driver_Fixer.exe

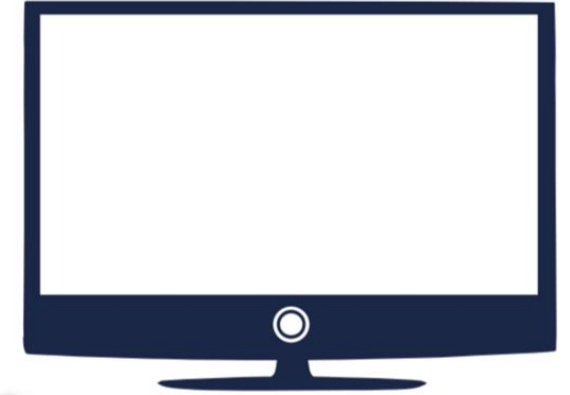
- Start ImpluseRC Driver Fixer
- Connect the FC USB to the PC While On DFU mode . (DO NOT power on FC via external 5V or Vbat)
- The ImpulseRC Driver Fixer should then see and load the proper driver

FIRMWARE INSTALLATION



2. Hold down the boot0 button.

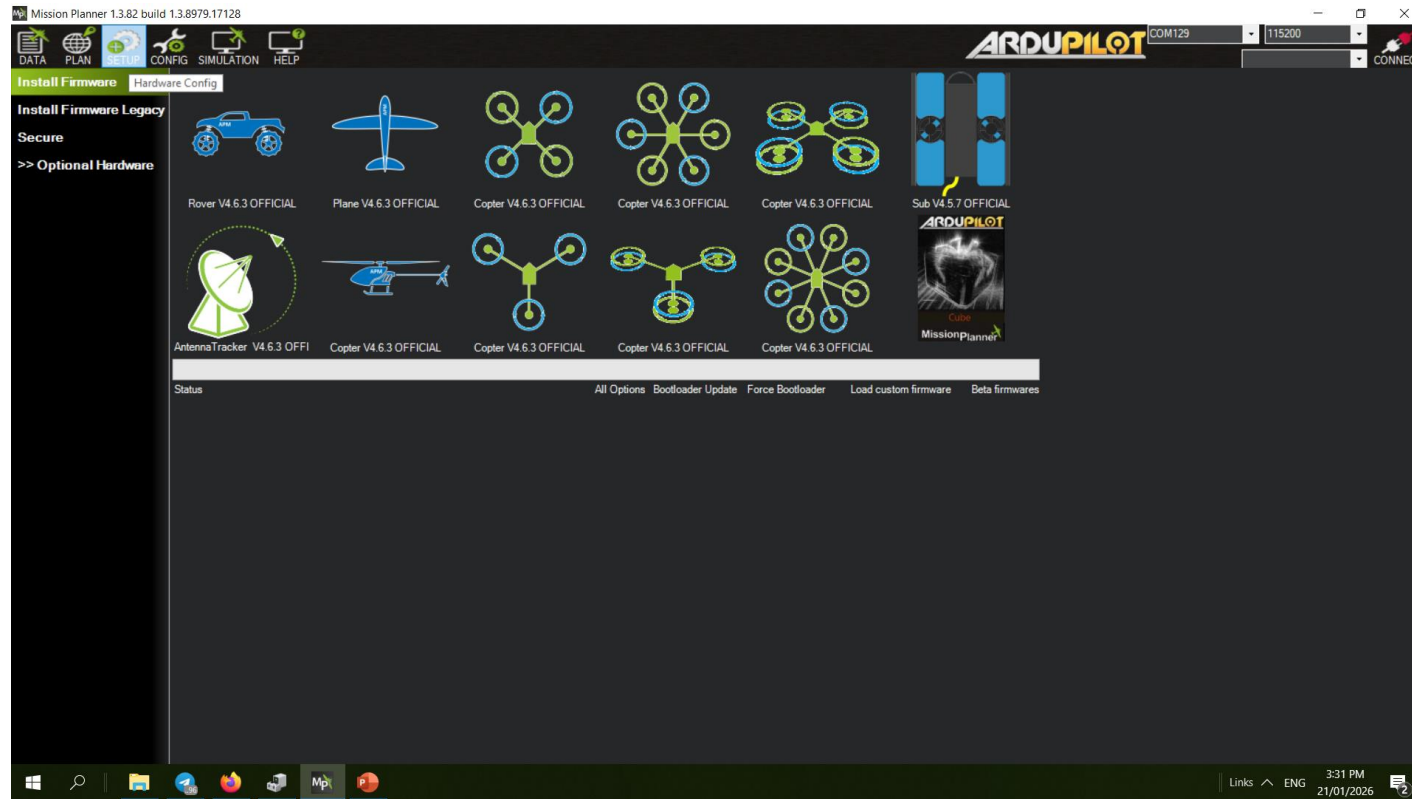
1. Connect TYPE-C
usb to Board



3. Connect to USB to PC

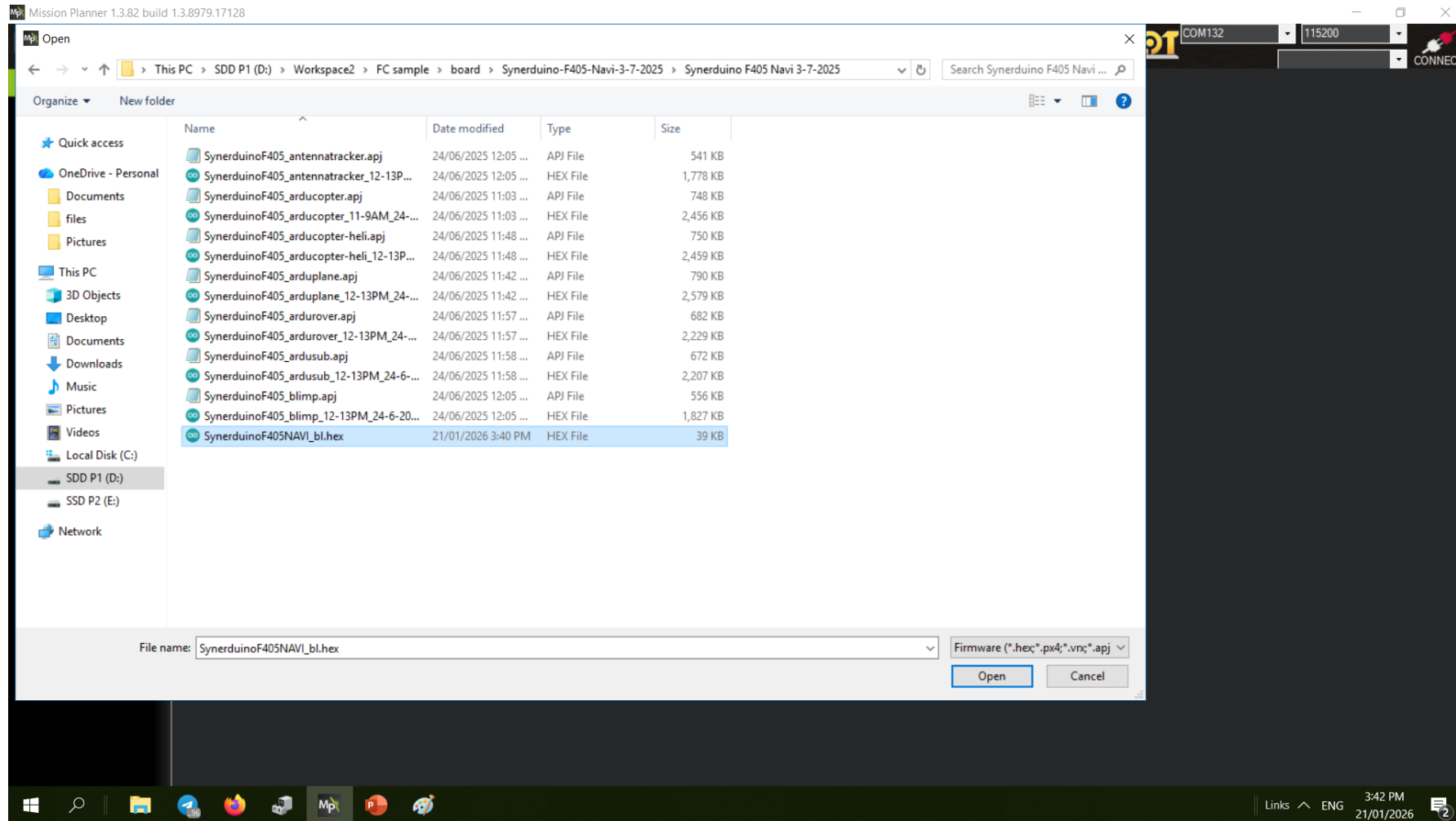
- Plug in USB you see Blue Led fading in and out
- Hold the Key Button for 3seconds till the blue light flashes and goes out
- In device manager the STM32 Bootloader (Com should show up)
- Note : this is for Brand new boards that were not flash with firmware , skip this for Synerduino package kits as they are preflashed for your convenience

FIRMWARE INSTALLATION



Open Mission planner

1. Setup Tab
2. Install Firmware
3. Load Custom Firmware



Load Custom Firmware

Select bootloader – SynerduinoF405NAVI.hex

SynerduinoF405.hex

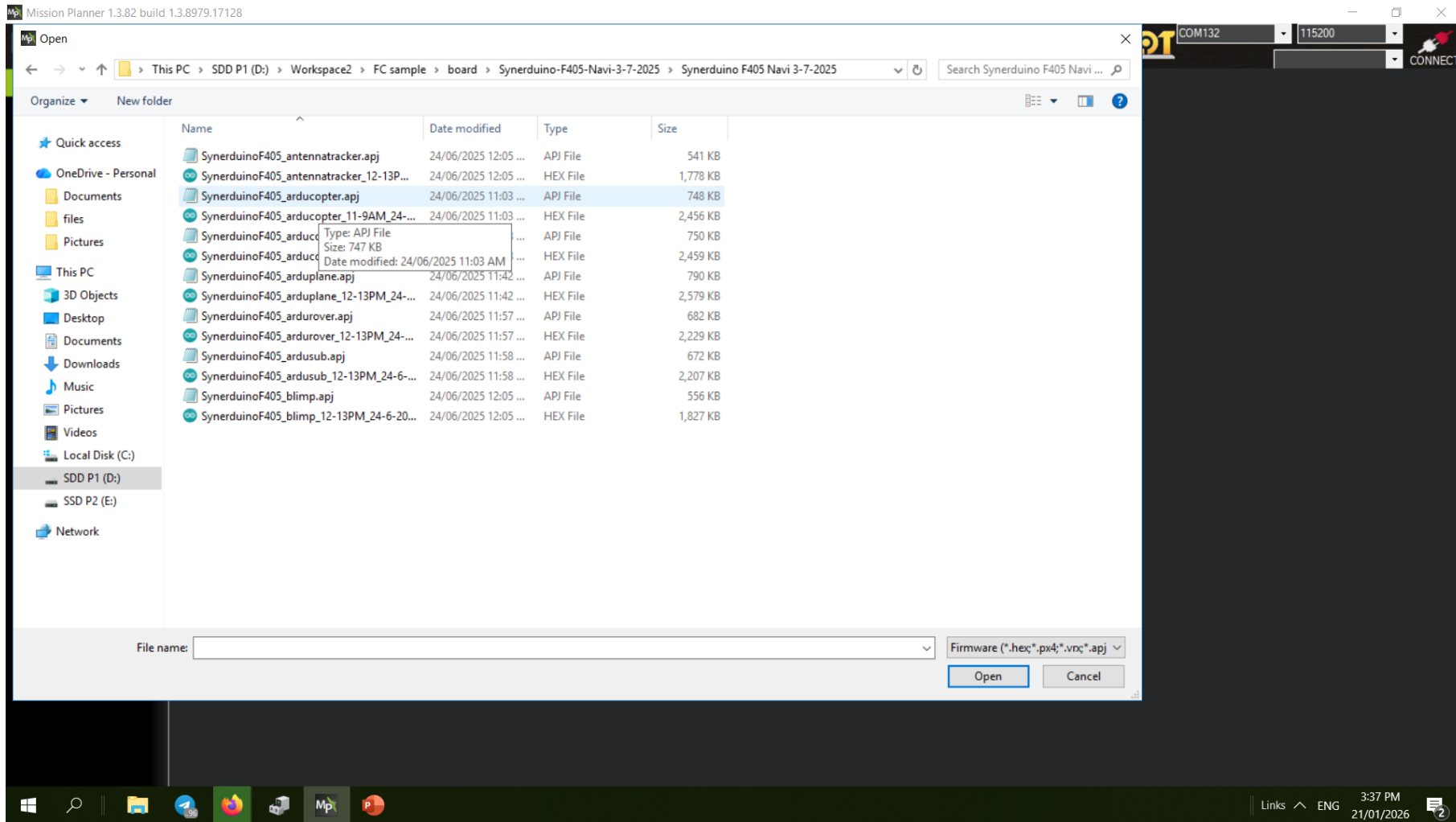
SynerduinoH743.hex



Click OK to Upload Via DFU



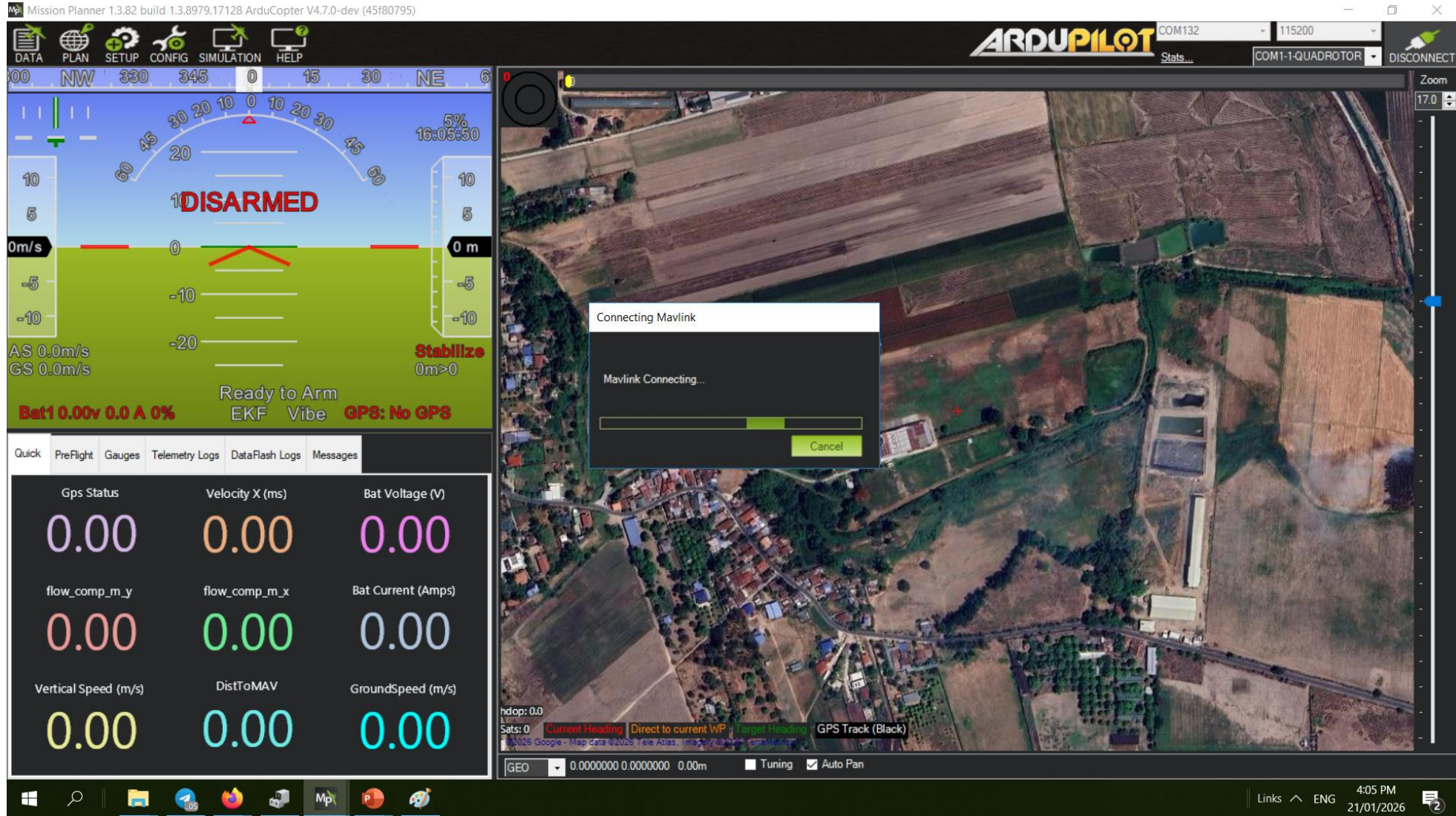
After Flashing DFU bootloader
Disconnect and Reconnect the USB of the Synerduino board



Same process this time the Comport needs to be selected to the Com of your board but not connected to the mission planner
Load Custom Firmware
Then select vehicle file arducopter.apj



From there the process of loading is complete .
Disconnect and reconnect the USB one more time



Connect mission planner to Synerduino board with the Com



Quick	PreFlight	Gauges	Telemetry Logs	DataFlash Logs	Messages
Gps Status	Velocity X (ms)	Bat Voltage (V)			
0.00	0.00	9.72			
flow_comp_m_y	flow_comp_m_x	Bat Current (Amps)			
0.00	0.00	26.27			
Vertical Speed (m/s)	DistToMAV	GroundSpeed (m/s)			
-0.05	0.00	0.09			

